

## Assembly Instructions

### Things you need to know

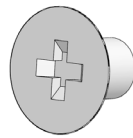
- Make sure not to drill or screw too far into panels.
- Panels are protected with a top clear wrap that needs to be removed prior to usage/installation.
- Leave all screws to be fully fastened until the end of the build.
- When purchased with DryAir facility, the internal top support plate will have the DryAir already attached.
- If you have any questions, contact us on: **+44 (0)20 8965 2913** or email: **sales@velopex.com**

### Hardware & Tools

Make sure not to drill or screw too far into panels.



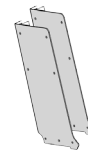
Phillips screwdriver



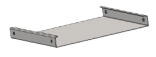
14 x 6mm Screws



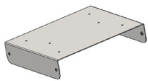
1 x Mobile base  
(PART NUMBER #1)



2 x Side panels  
(PART NUMBERS #2 & #3)



1 x Drawer-support  
(PART NUMBER #4)

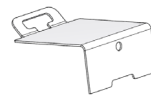


1 x Internal top support plate  
(PART NUMBER #5)

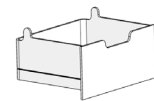


1 x Internal top support plate with DryAir unit attached

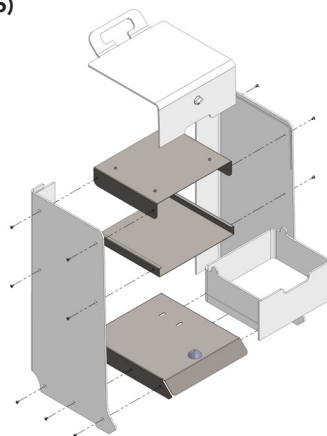
\* If the AquaCare Cart is purchased with the DryAir option, the top support plate supplied is shown above  
(PART NUMBER #5)



1 x Top panel  
(PART NUMBER #6)



1 x Drawer  
(PART NUMBER #7)



### Caring for your AquaCare Cart

Looking after your Cart is really easy and with the right care and maintenance it will last for many years. You can clean the PVC material with warm soapy water, or an all purpose non-abrasive cleaner. Never use harsh chemicals or thinner based cleaners. Do not use steel wool or rough products to clean the unit.