

STEP 1. SET-UP

QSG.v1.09

1 INSERT FOOT CONTROL



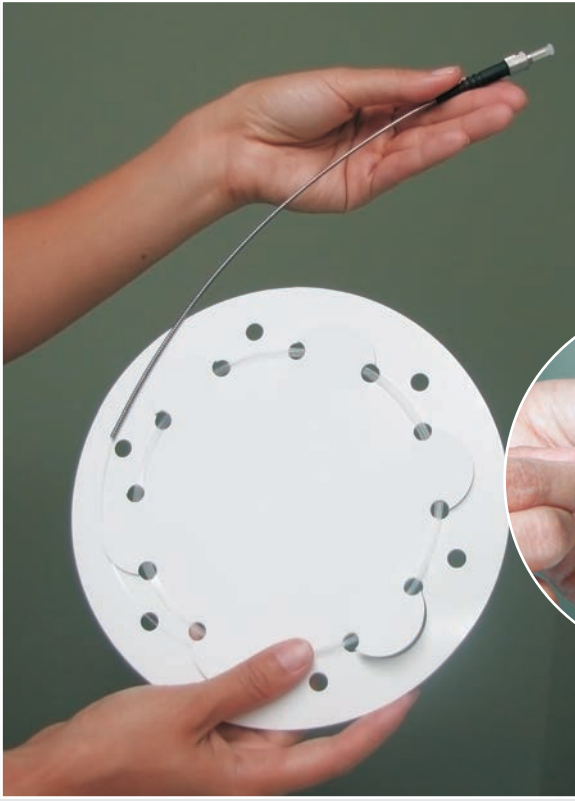
2 INSERT REMOTE INTERLOCK



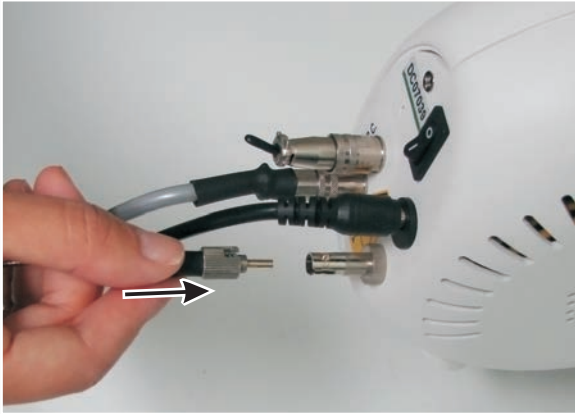
3 INSERT POWER



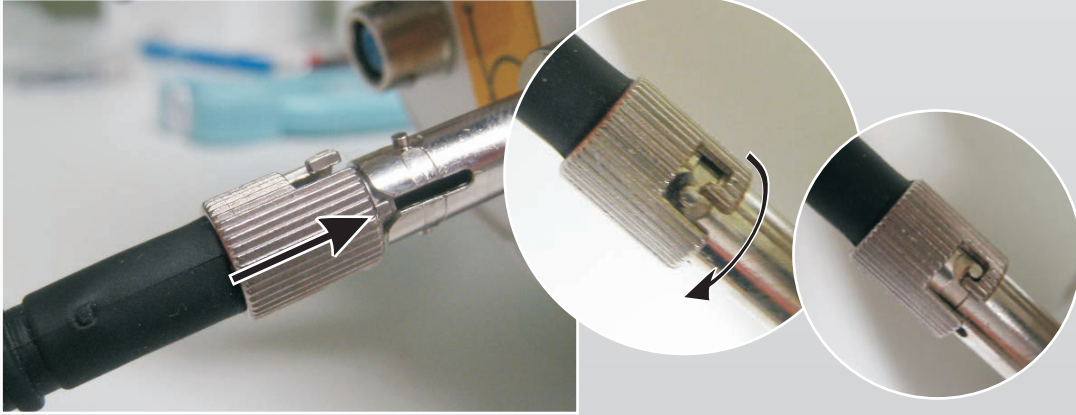
4 REMOVE FIBER AND CAPS



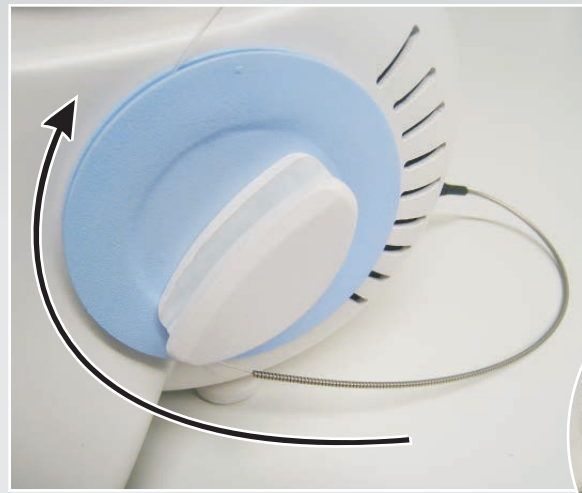
5 INSERT FIBER



PUSH AND TURN



5 STORE FIBER ON FIBER SPOOL



MAKE SURE THE FIBER IS UNDER A TAB INSIDE OF THE SPOOL



6 CONNECT POWER AND TURN ON UNIT

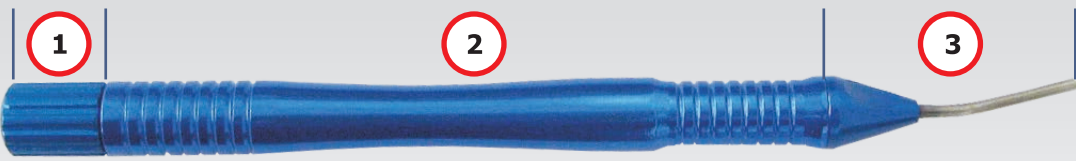


7 INSERT KEY AND TURN ON THE DISPLAY. UNIT IS READY FOR USE.



STEP 2. DELIVERY SYSTEM

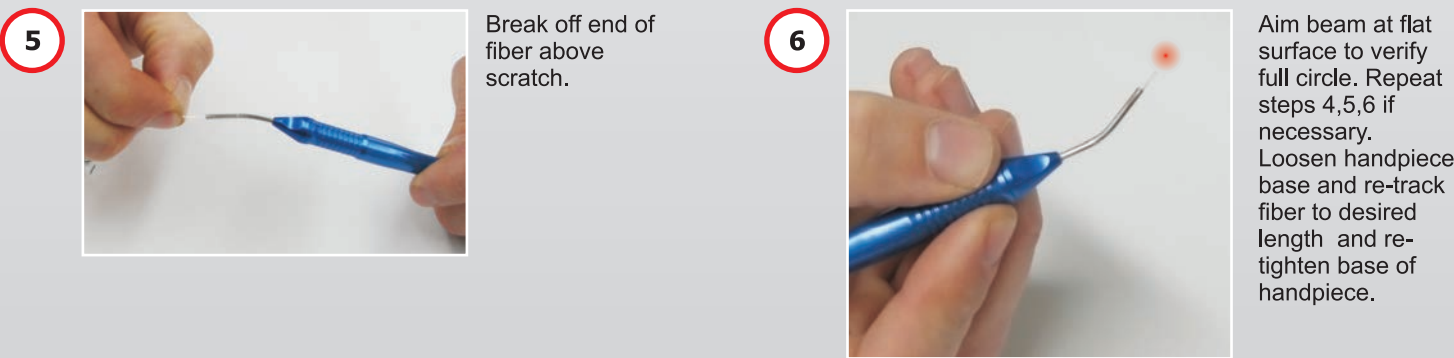
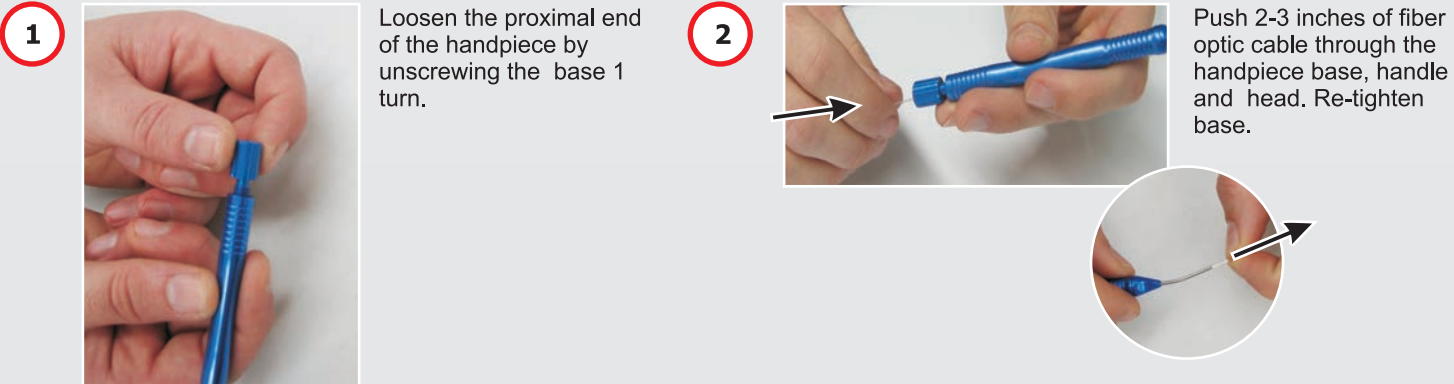
QSG.v1.09



Handpiece parts:
1. Handpiece Base
2. Handpiece Handle
3. Handpiece Head

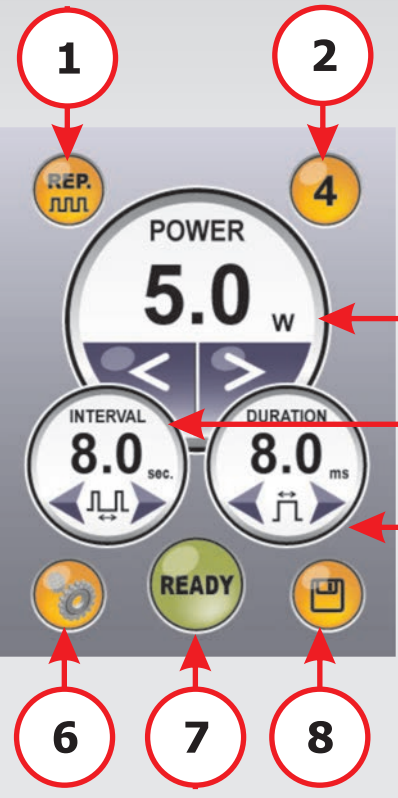
Directions for Stripping and Cleaving PICASSO Fiber:

PICASSO fiber should be cleaved after each procedure.



STEP 3. PROGRAMMING CUSTOM SETTINGS

QSG.v1.09



1. CONT/REP: Continuous or Repeat MODEs
2. PRESETS: (See reverse for details)
3. POWER: 0.1 - 7 Watts
4. INTERVAL: 20 ms - 9.9 secs increments of .1ms
5. DURATION: 20 ms - 9.9 secs, setting increment is .1ms
6. SETTINGS: Languages, Aiming Beam, Volume
7. STANDBY/READY: Standby or Ready button
8. SAVE: Save button

PROGRAMMING PICASSO

Language selection:

English is the default language. There are 7 languages can be selected:

- English
- Spanish
- Portuguese
- Japanese
- Russian
- Chinese
- Korean

To select another language press desired language for 2 seconds and the system will restart in the reset language.

Picasso is Pre-Programmed for Procedures (See reverse page for pre-programmed PRESETS)

Changing Presets - 4 custom preset are available in CONT and REP mode (8 total)

- STEP 1: Select desired type of laser operation mode: Continuous or Repeating. Continuous mode. In this mode, INTERVAL and DURATION are not available. POWER is able to be selected and saved as a preset. Repeat mode. In this mode, all the parameters (INTERVAL, DURATION and POWER) are able to be selected as a preset. Use the buttons to select desired interval and duration from 20ms to 9.9 secs.
- STEP 2: Select desired preset 1-4.
- STEP 3: POWER. Select desired power settings 0.1 - 7 watts using the buttons.
- STEP 4: INTERVAL / DURATION. Select desired interval and duration (available only on REP mode).
- STEP 5: SAVE. Save desired settings by pushing the SAVE button for 2 seconds until the beep is heard.
- STEP 6: READY. Push STANDBY button to put unit into READY mode. Press the footswitch to emit laser.
- STEP 7: Repeat steps 1 through 6 to program additional presets.

AIMING BEAM brightness settings
To select the brightness for aiming beam, press button.

5 steps:
Off->Weakest->Weak->Strong->Strongest

VOLUME settings
To select the volume of the beep sound, press button.

5 steps:
Mute->Quiet->Normal->Loud->Very loud

QUICK START GUIDE

Picasso
Diode
Laser

AMD LASERS™
Effective, Practical, Affordable, World Class Lasers.

AMD LASERS™, LLC.
7405 Westfield Blvd.
Indianapolis, IN 46240
TEL: 317.202.9530
FAX: 678.868.4108
www.amdlasers.com
support@amdlasers.com



AMD LASERS™
Effective, Practical, Affordable, World Class Lasers.

PRESETS AND PROCEDURES

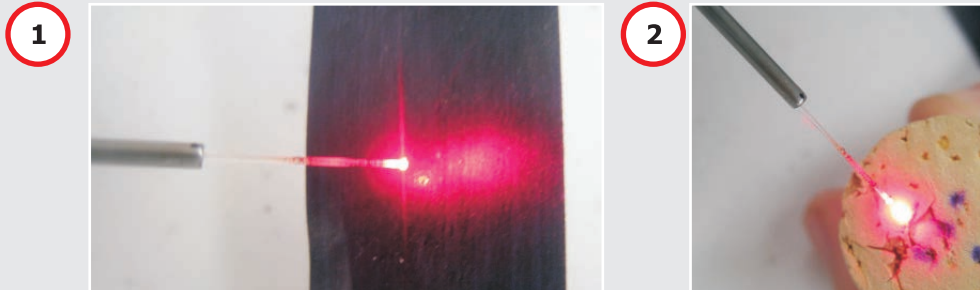
QSG v1.09

PRESET #	CONTINUOUS MODE (CONT)	REPEAT MODE (REP)
1	<p>1 SURGERY - CUT & COAG INITIATED TIP 3.0 WATTS WITH ANESTHESIA</p>	<p>1 SURGERY - CUT & COAG - COMFORT SETTING INITIATED TIP 2.0 WATTS 30 ms INTERVAL 30 ms DURATION</p>
2	<p>2 TROUGHING POSTERIOR INITIATED TIP 2.2 WATTS WITH ANESTHESIA</p>	<p>2 PERIO TREATMENT NON-INITIATED TIP 1.4 WATTS 20 ms INTERVAL 20 ms DURATION</p>
3	<p>3 TROUGHING ANTERIOR INITIATED TIP 1.2 WATTS</p>	<p>3 ENDO STERILIZATION NON-INITIATED TIP 0.8 WATTS 20 ms INTERVAL 20 ms DURATION</p>
4	<p>4 DECONTAMINATION/DESENSITIZING NON-INITIATED TIP 0.5 WATTS</p>	<p>4 BLEACHING 7 WATTS 1.5 ms INTERVAL 9.9 ms DURATION</p>

PRESETS are meant as a general guideline for usage. Operator must use individual judgment for each procedure and patient. See page 17 of "Operator Manual" for full list of clinical applications.

INITIATED TIP DIRECTIONS:

- 1) STRIP AND CLEAVE AS DESCRIBED ON REVERSE SIDE.
- 2) SELECT PRESET 1
- 3) TOUCH APPROXIMATELY 5 MM OF FIBER TIP ON ARTICULATING PAPER (FIGURE 1) OR 2 - 4 MM INTO A CORK WHILE FIRING LASER (FIGURE 2). ROTATE TIP ON PAPER.



EQUIPMENT DESCRIPTION

QSG v1.09

#	Item name	Item Description
1	LCD COLOR TOUCH SCREEN	Displays and controls the parameters, such as working status of the system, operation mode, pulse duration, output energy, etc.
2	EMERGENCY STOP BUTTON	Disables the unit in the event of an emergency. Push once to disable Picasso. Push again to enable.
3	HANDPIECE	Handpiece
4	HANDPIECE HOLDER	Holds handpiece when not in use
5	FIBER SPOOL	Stores fiber
6	KEYSWITCH	Power ON and OFF
7	CIRCUIT BREAKER	Master ON/OFF switch
8	REMOTE INTERLOCK CONNECTOR	Connects interlock to unit
9	FOOTSWITCH CONNECTOR	Connects footswitch to the unit
10	POWER SUPPLY CONNECTOR	Connects power supply to the unit
11	FIBER CONNECTOR	Connect fiber to the unit

