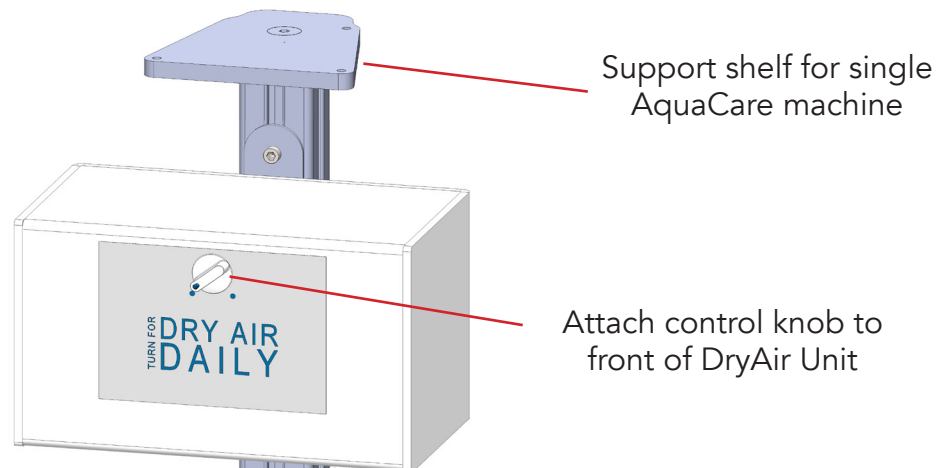


### Assembly Instructions with DryAir (Single Version)

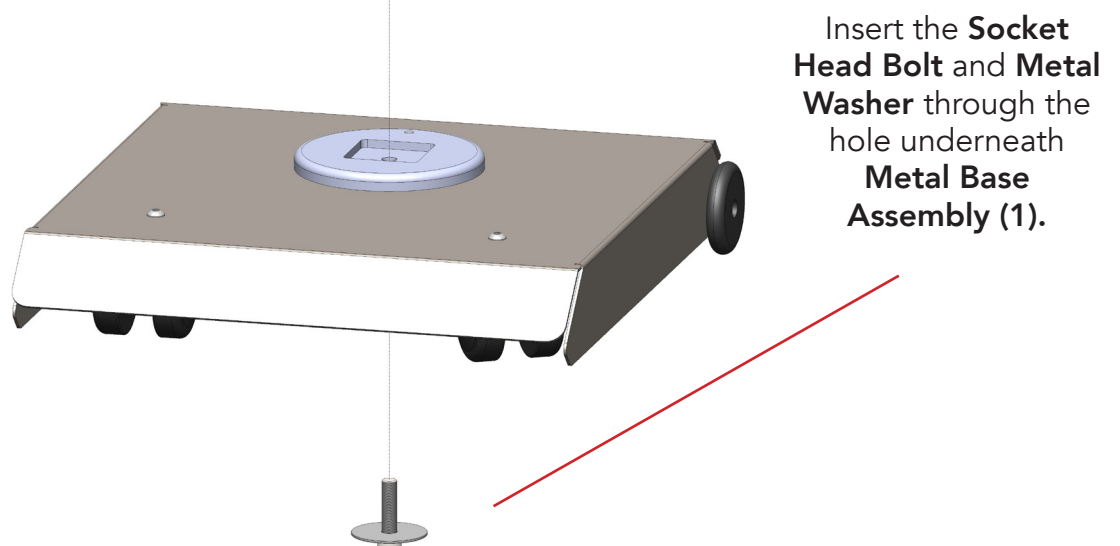
#### ONE NUT ASSEMBLY

The DryAir Unit has been assembled except for attaching the base assembly to the Dryer Unit Assembly with 1 screw through the base.



**NOTE:** The height of the DryAir Box can be adjusted using the Allen keys and nuts, sliding along the support column.

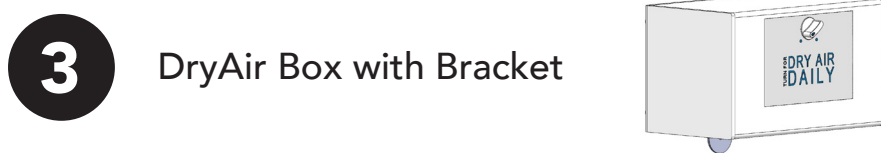
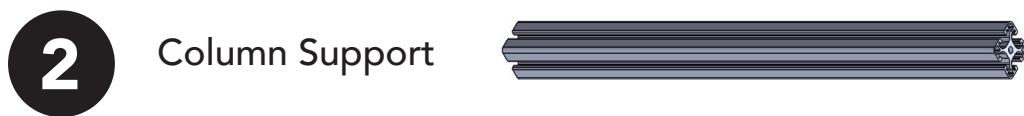
The DryAir Box should have a column bracket and 2 x "T" slot slides attached to it.



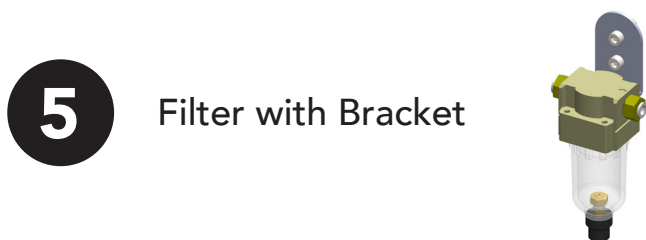
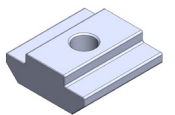
## Parts List Illustration



Profile View



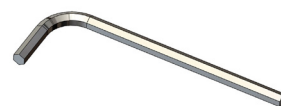
T-Slot Nut x 2



Socket Head Screw



Metal Washer



4mm & 6mm  
Allen Keys

