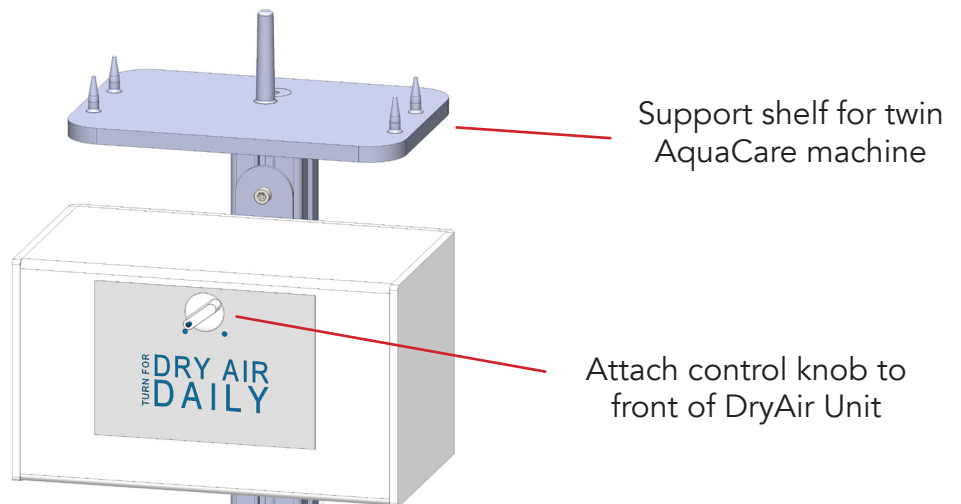


### Assembly Instructions with DryAir (Twin Version)

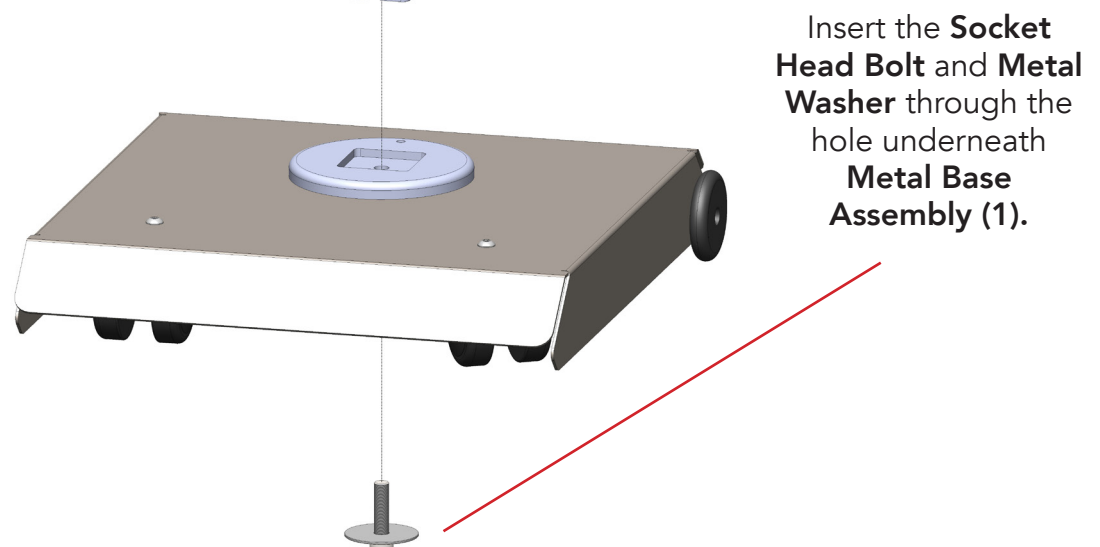
#### ONE NUT ASSEMBLY

The DryAir Unit has been assembled except for attaching the base assembly to the Dryer Unit Assembly with 1 screw through the base.



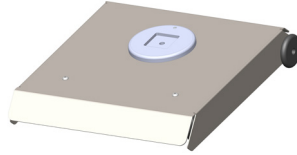
**NOTE:** The height of the DryAir Box can be adjusted using the Allen keys and nuts, sliding along the support column.

The DryAir Box should have a column bracket and 2 x "T" slot slides attached to it.



### Parts List Illustration

- 1** Metal Base Assembly

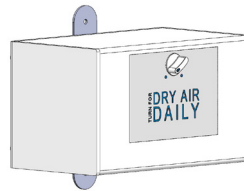


Profile View

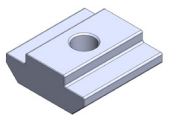
- 2** Column Support



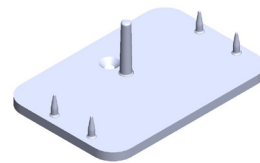
- 3** DryAir Box with Bracket



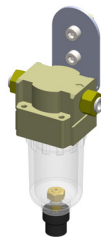
T-Slot Nut x 2



- 4** Support Shelf For Twin AquaCare Machine



- 5** Filter with Bracket



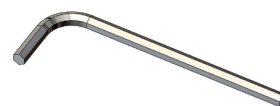
- 6** Fixing Components



Socket Head Screw



Metal Washer



4mm & 6mm  
Allen Keys

- 7** Instruction Sheet