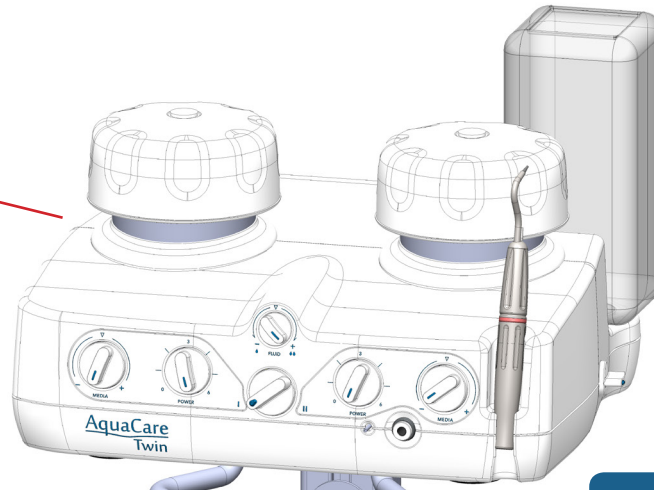


AquaCare Stand (DryAir Version) Part No: I/MAC 8553F

The AquaCare Stand has been designed to be compact, secure and mobile. The support shelf ensures the unit cannot slip when the stand is moved.

It provides facilities to mount the filter and DryAir Unit necessary where clean dry air is not available.

The stand enables the AquaCare unit to be moved conveniently into place when required.



Dimensions:

Width: 34cm

Depth: 34cm

Height of Stand
(Without Unit) : 64cm

(With Unit): 84cm

Weight: 5kg

The AquaCare Stand has a handle fitted to the top shelf to allow easy grip. This ensures stable and secure movement of the stand and machine.

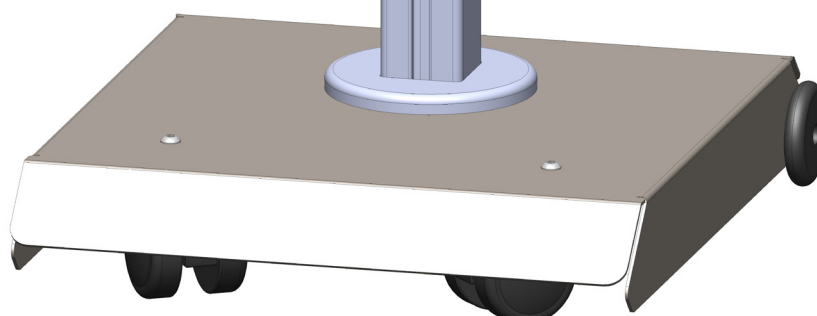


The AquaCare Stand comes fitted with a DryAir Box. It holds the box in place and allows for adjustment of the height position.

The AquaCare Stand comes fitted with a air filter. It also allows the height positioning of the air filter to suit your needs.

The AquaCare Stand is constructed using high quality, strong metal to ensure durability and stability.

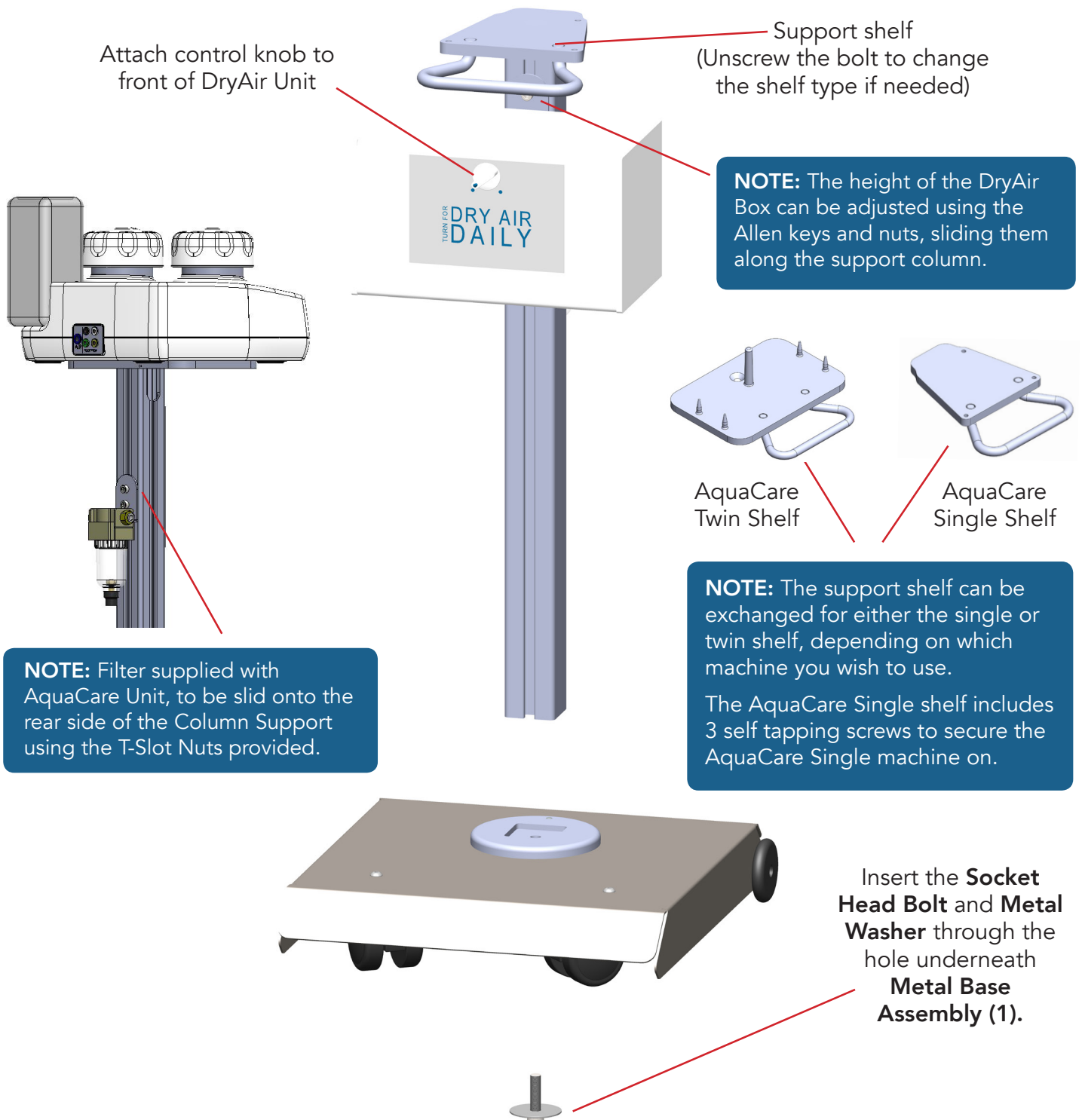
The AquaCare Stand has wheels fitted to the base to allow ease of movement.



Assembly Instructions with DryAir Part No: I/MAC 8553F

ONE NUT ASSEMBLY

The DryAir Unit has been assembled onto the Column Support. The stand has been assembled except for attaching the Metal Base Assembly to the column support with 1 screw being placed through the base. Once complete, situate the AquaCare Twin machine on top of the support shelf placing it over the pins. If you have an AquaCare Single Machine, replace the support shelf for the AquaCare Twin with the AquaCare Single shelf. This is simply done by unscrewing the bolt on top and replacing it with the Single shelf. Secure the AquaCare Single using the 3 screws provided underneath the shelf to secure the machine.



Attach control knob to front of DryAir Unit

Support shelf
(Unscrew the bolt to change the shelf type if needed)

NOTE: The height of the DryAir Box can be adjusted using the Allen keys and nuts, sliding them along the support column.

AquaCare Twin Shelf

AquaCare Single Shelf

NOTE: Filter supplied with AquaCare Unit, to be slid onto the rear side of the Column Support using the T-Slot Nuts provided.

NOTE: The support shelf can be exchanged for either the single or twin shelf, depending on which machine you wish to use.

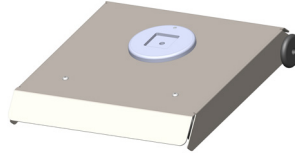
The AquaCare Single shelf includes 3 self tapping screws to secure the AquaCare Single machine on.

Insert the **Socket Head Bolt** and **Metal Washer** through the hole underneath **Metal Base Assembly (1)**.

Parts List Illustration

1

Metal Base Assembly



Profile View

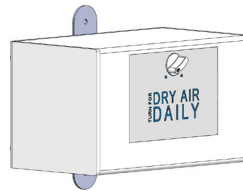
2

Column Support

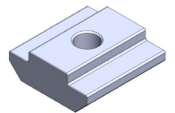


3

DryAir Box with Bracket

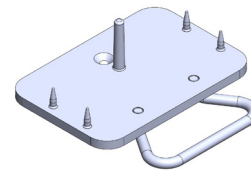


T-Slot Nut x 2

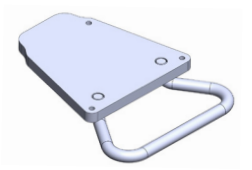


4

Support Shelves For AquaCare Machine



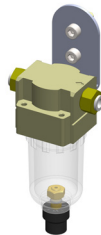
AquaCare
Twin Shelf



AquaCare
Single Shelf

5

Filter with Bracket



6

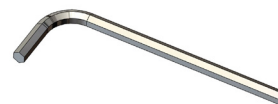
Fixing Components



Socket Head Screw



Metal Washer



4mm, 5mm & 6mm
Allen Keys

7

Instruction Sheet