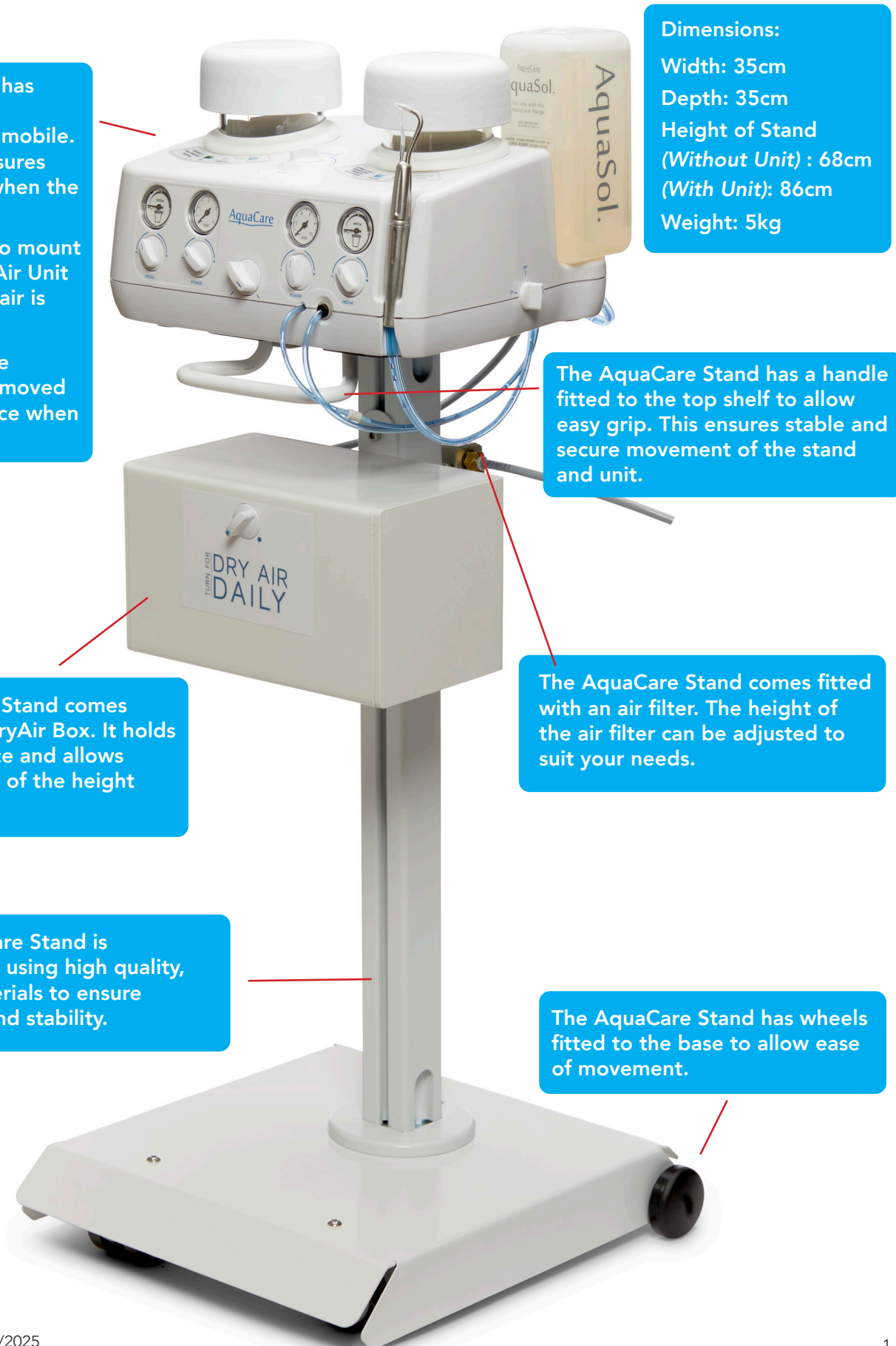


**AquaCare Stand & DryAir Part No: I/MAC8553F**

**AquaCare Black Stand & DryAir Part No: I/MAC8523F**



The AquaCare Stand has been designed to be compact, secure and mobile. The support shelf ensures the unit cannot slip when the stand is moved.

It provides facilities to mount the air filter and DryAir Unit necessary where dry air is not available.

The stand enables the AquaCare unit to be moved conveniently into place when required.

Dimensions:

Width: 35cm

Depth: 35cm

Height of Stand

(Without Unit) : 68cm

(With Unit): 86cm

Weight: 5kg

The AquaCare Stand has a handle fitted to the top shelf to allow easy grip. This ensures stable and secure movement of the stand and unit.

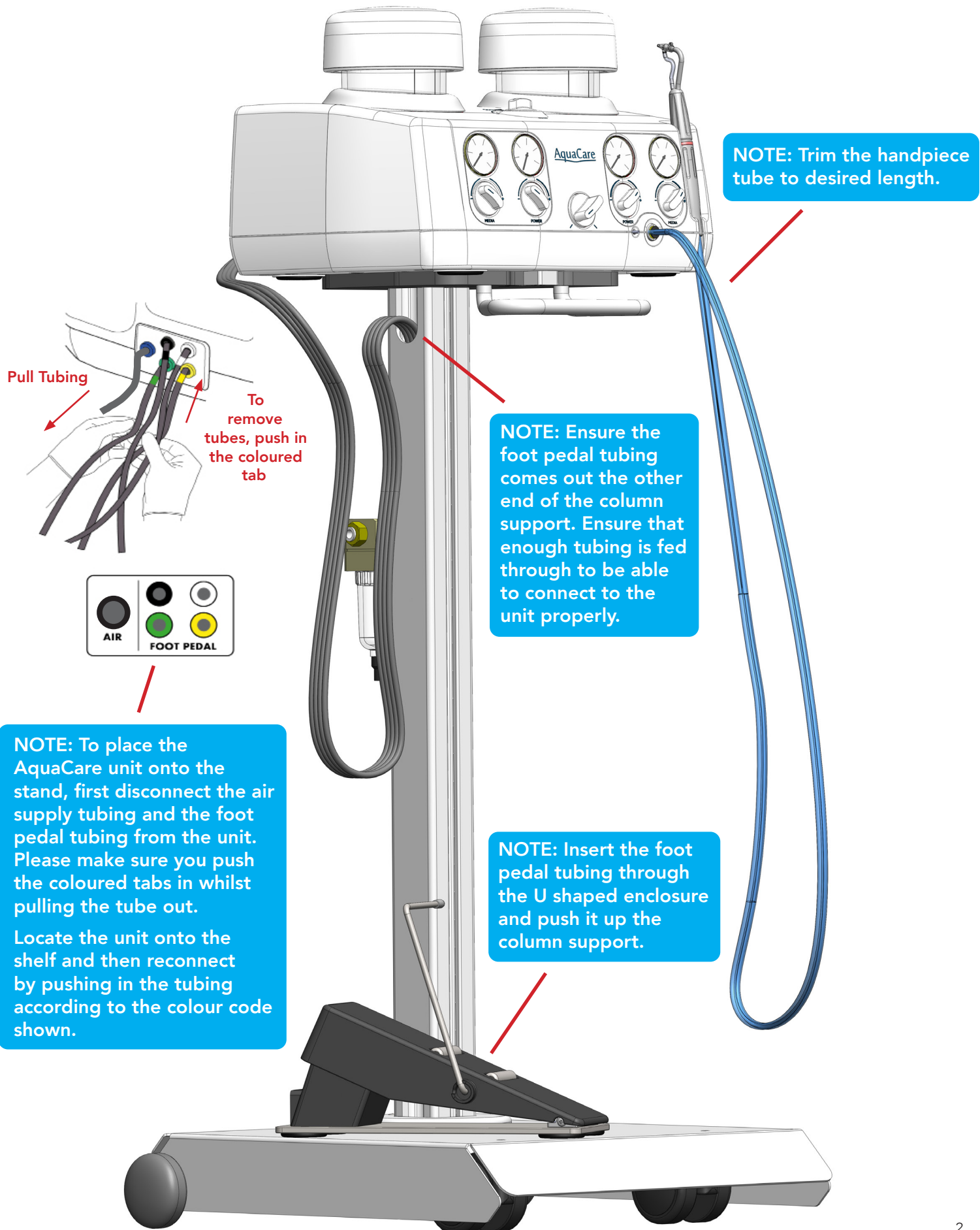
The AquaCare Stand comes fitted with an air filter. The height of the air filter can be adjusted to suit your needs.

The AquaCare Stand comes fitted with a DryAir Box. It holds the box in place and allows for adjustment of the height position.

The AquaCare Stand is constructed using high quality, strong materials to ensure durability and stability.

The AquaCare Stand has wheels fitted to the base to allow ease of movement.

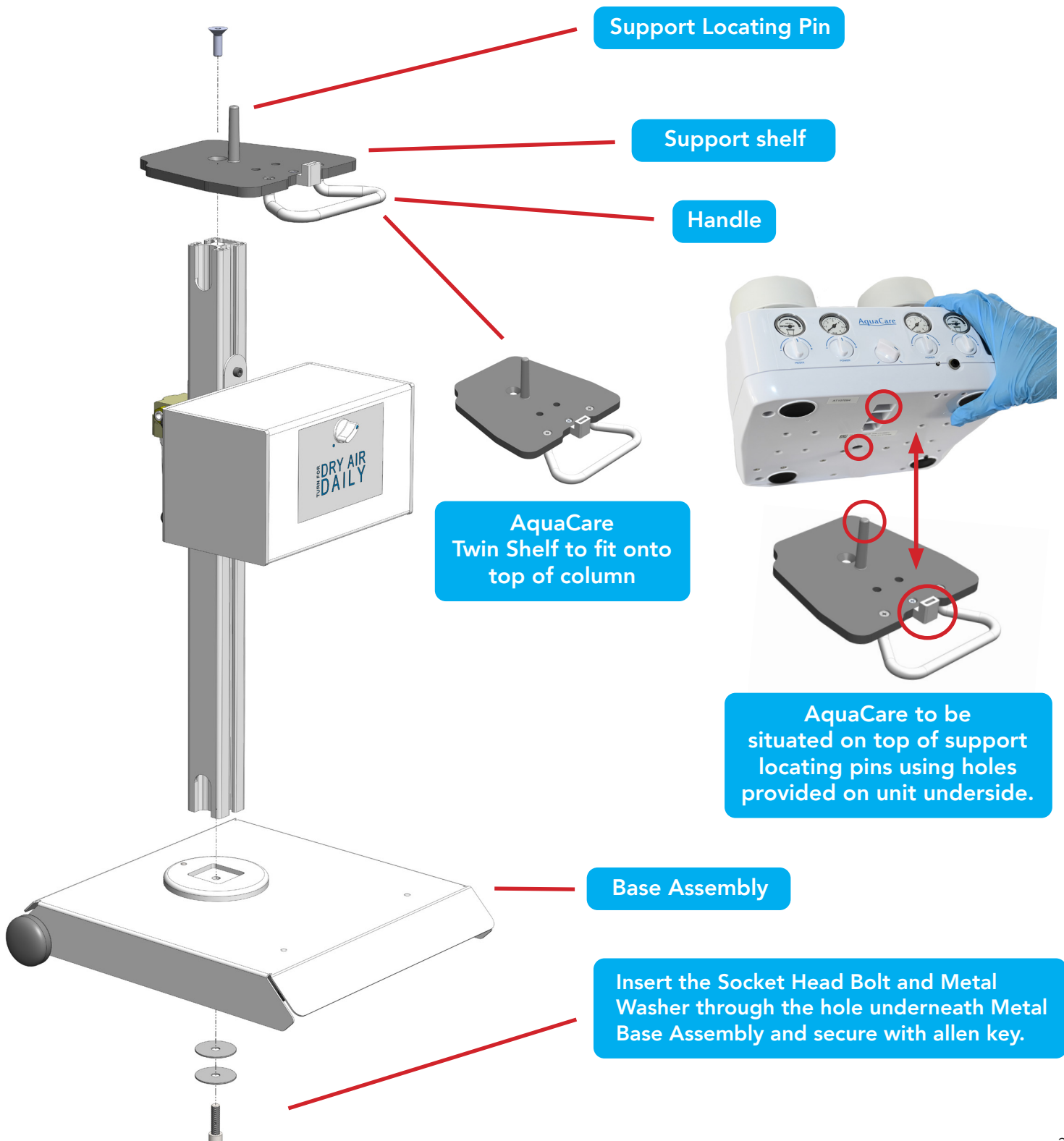
## Connecting The Foot Pedal To AquaCare Unit



## Assembly Instructions

### ONE NUT ASSEMBLY

The DryAir unit has been pre-assembled onto the column support. The stand has been partially assembled and only requires the Metal Base to be attached to the column support with 1 screw and washer being placed through the base. Once fully assembled, situate the AquaCare unit on top of the support shelf placing it over the pins.



## Instructions For Rear Tubing Connection And Filter Adjustment

The supplied air filter removes moisture and oil out of the incoming air from the air supply system/compressor at the clinic. This helps to give an indication of the incoming air quality and ensure that better quality of air is supplied to the AquaCare unit.

The height of the air filter can be adjusted by loosening the bolts with the supplied Allen key and sliding the air filter along the column support to the desired location

Connections from the foot pedal fed through the column support and connected to the back of the AquaCare unit.

Connection from DryAir unit (AIR OUTPUT) to the back of the AquaCare Unit. The air that is now fed into the AquaCare Unit is significantly cleaner and drier.

6mm air input hose (supplied with AquaCare unit) from compressor to air filter.

Connection form air filter to DryAir unit (AIR INPUT). Filtration ensures that air that is fed into the DryAir unit has reduced moisture and oil level.

**NOTE:** To completely remove and replace the air filter, the column support must first be removed from the metal base. Loosen the screws of the air filter with the supplied allen key and slide the filter off the column support. Slide on a new air filter by aligning the T-Slot nuts with the column rail profile.

## Parts List Illustration

- 1

Metal Base



Profile View


- 2

Column Support


- 3

T-Slot Nut and Screw



x 2



x 2
- 4

Support Shelf For AquaCare Unit


- 5

Filter with Bracket



AquaCare  
Twin Shelf
- 6

Fixing Components



Socket Head  
Screw



Metal Washer



4mm, 5mm & 6mm  
Allen Keys
- 7

Instruction Manual
- 8

DryAir Box with Bracket


- 9

Clear Tube & Grey Tube





