

AquaCare Stand

AquaCare Stand: I/MAC 8513F (Twin) AquaCare Black Stand: I/MAC 8514F (Twin)

The AquaCare Stand has been designed to be compact, secure and mobile. The support shelf ensures the unit cannot slip when the stand is moved.

The stand enables the AquaCare unit to be moved conveniently into place when required.

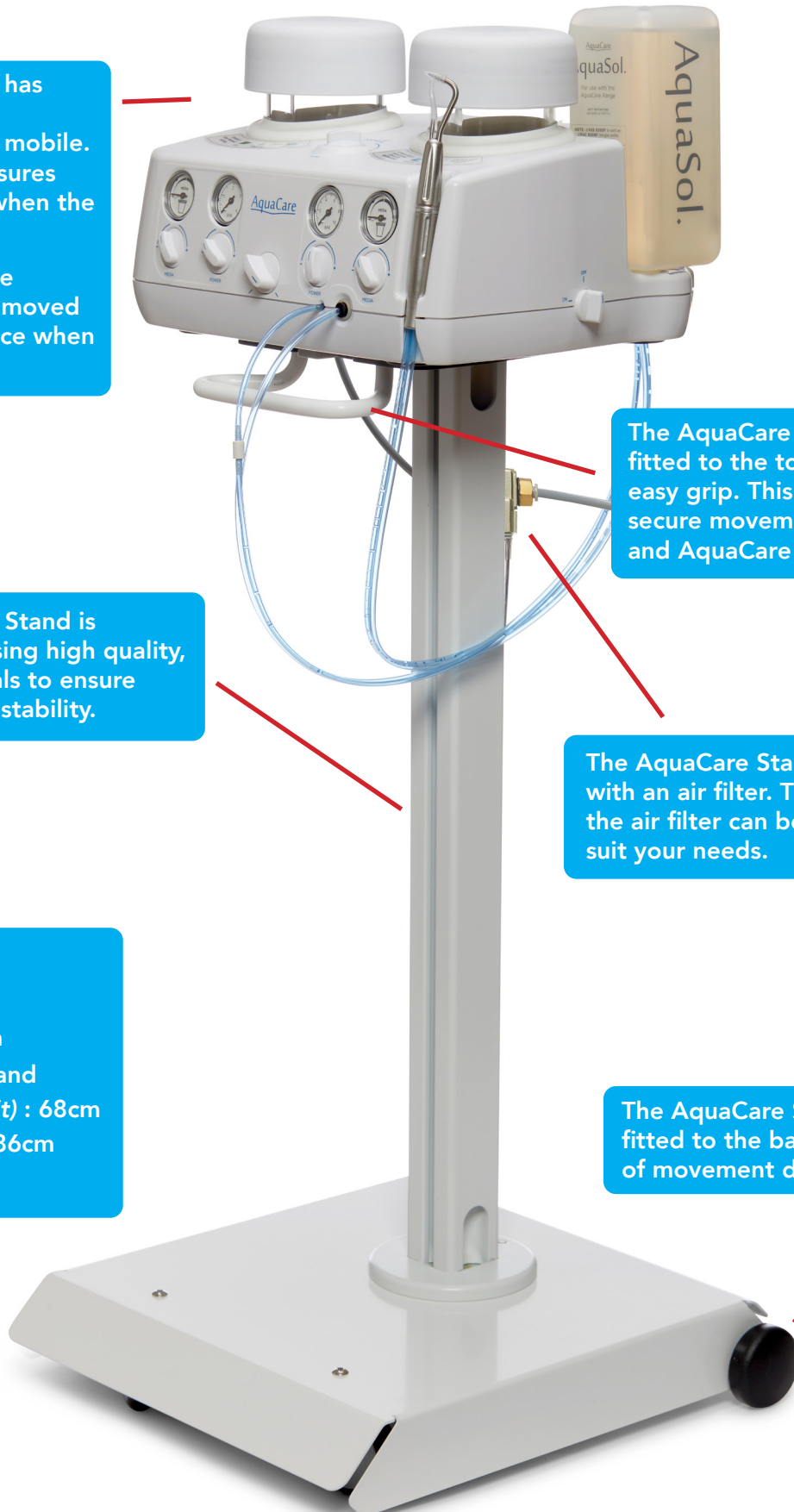
The AquaCare Stand is constructed using high quality, strong materials to ensure durability and stability.

Dimensions:
Width: 35cm
Depth: 35cm
Height of Stand
(Without Unit) : 68cm
(With Unit): 86cm
Weight: 3kg

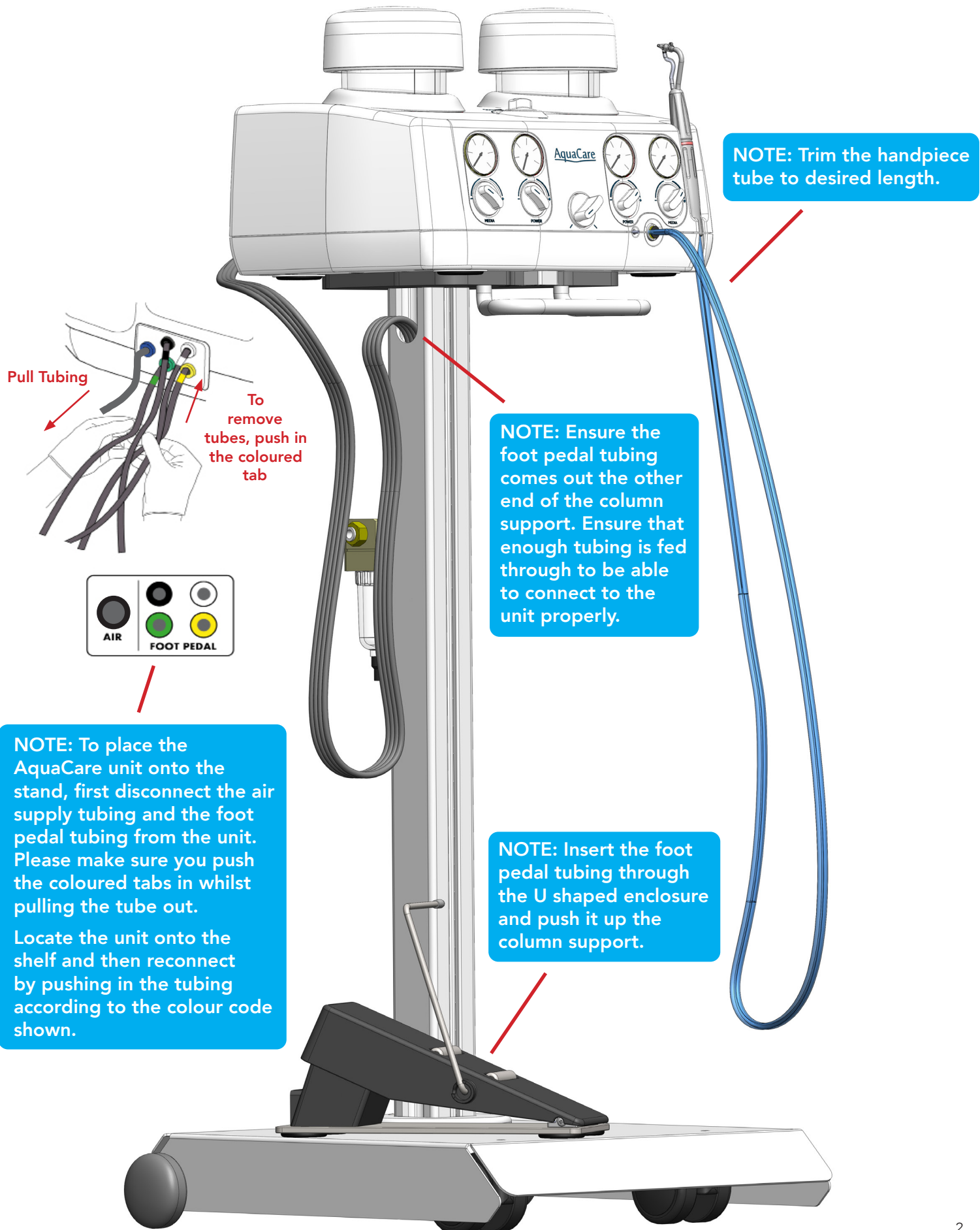
The AquaCare Stand has a handle fitted to the top shelf to allow easy grip. This ensures stable and secure movement of the stand and AquaCare unit.

The AquaCare Stand comes fitted with an air filter. The height of the air filter can be adjusted to suit your needs.

The AquaCare Stand has wheels fitted to the base to allow ease of movement during use.

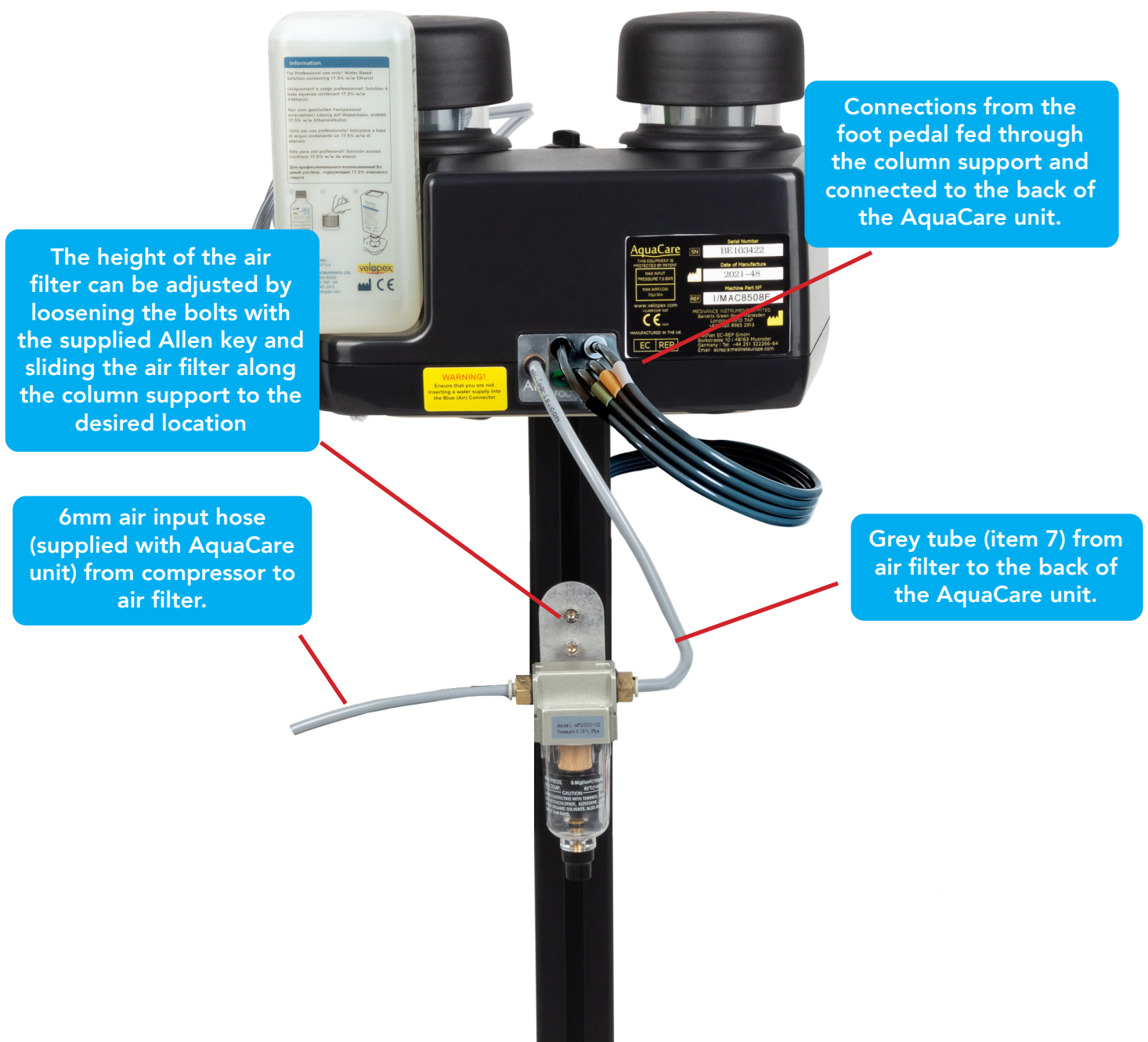


Connecting The Foot Pedal To AquaCare Unit



Instructions For Rear Tubing Connection And Filter Adjustment

The supplied air filter removes moisture and oil out of the incoming air from the air supply system/compressor at the clinic. This helps to give an indication of the incoming air quality and ensure that better quality of air is supplied to the AquaCare unit.



NOTE: To completely remove and replace the air filter, the column support must first be removed from the metal base. Loosen the screws of the air filter with the supplied allen key and slide the filter off the column support. Slide on a new air filter by aligning the T-Slot nuts with the column rail profile.

Parts List Illustration

Profile View

- 1** Column Support



- 2** Metal Base Assembly


- 3** Fixing Components
(For Column Support)





Socket Head Screw Metal Washer x 2 4mm, 5mm & 6mm Allen Keys
- 4** Support Shelf Assembly
(Only One Support Shelf Is Provided)



AquaCare Twin Shelf
- 5** Filter with Bracket Assembly


- 6** T-Slot Nut and Screw
(For Air Filter)



x 2



x 2
- 7** Clear Tube
(For DryAir Unit, If Applicable)


- 8** Grey Tube



